



# Easi-Scope Wireless<sup>TM</sup>

Magnifies specimens up to  
43x on a 17" computer monitor



## USER GUIDE

# CONTENTS

## BEFORE USE 4

Important information	4
Care and maintenance	4
Warning	4
Product description	5
Computer requirements	5

## PRODUCT AT A GLANCE 6

Package contents	6
Product overview	7
Product specification	7

## GETTING STARTED 8

Charging	8
Assembling the product	8
Turning on the device	9
Focusing	9
Capturing	10
Turning off the device	10

## INSTALLING THE SMARTPHONE APP 11

## USING THE XPLOVIEW APP WITH A SMARTPHONE 11

Connecting the device	11
Open the xploview app	12

Button menu	13
System settings menu	14
Deleting an item	15

## INSTALLING THE COMPUTER SOFTWARE 17

Software installation	17
-----------------------	----

## USING THE XPLOVIEW SOFTWARE WITH A COMPUTER 18

Connecting the device	18
Starting the xploview software	18
Selecting the device in the xploview software	19
Button menu	20
Full screen viewing	21
Image rotation / flip	22
System settings menu	23
Device setup	24
Timed shot setup	24
Movie setup	24
Save setting	25
Language setting	25
Advanced settings	25
Saved files	27
Uninstalling the xploview software	27

# BEFORE USE

## Important information

Please read this instruction manual carefully before using this product, and retain this instruction for future reference.

Improvements and changes to this text necessitated by typographical errors, or improvements to the software and / or equipments may be made at any time without notice.

## Care and maintenance

- Avoid vibration, shock and pressure e.g. dropping the microscope.
- Keep the device dry and protect it from water or vapour.
- Do not leave your device in a place with extreme high or low temperature.
- Do not touch the device with a wet hand as it may damage the device, or cause an electric shock to the user.
- Do not use or store the device in dusty, dirty areas as its moving parts may be damaged.
- Do not use harsh chemicals, cleaning solvents or strong detergents to clean the device. Wipe it with a soft cloth slightly dampened in a mild soap-and-water solution.

## Warning

- Do not place lighted wireless microscope upon the eye, doing so may cause permanent eye damage.
- Do not attempt to open or dismantle the wireless microscope.

## Product description

This wireless microscope features a 640 x 480 CMOS sensor and can be paired with up to 2 Wi-Fi enabled devices within a 10m range. It is compatible with most Android, IOS, Windows and Mac OS devices.

Simply connect the device to the wireless microscope's WLAN access point to start viewing, capturing and recording live images.

## Computer requirements

Smartphone (Android and IOS)

### WLAN

Wi-Fi 802.11 b / g / n

Windows based PC

### Compatible operating systems

Windows 10 (32 bit or 64 bit)  
Windows 8 (32 bit or 64 bit)  
Windows 7 (32 bit or 64 bit)  
Windows Vista (32 bit or 64 bit)  
Windows XP SP2, SP3

### WLAN

Wi-Fi 802.11 b / g / n

Mac OS based PC

### Compatible operating systems

Mac OS X 10.5.6 - Mac OS X 10.11.x

### WLAN

Wi-Fi 802.11 b / g / n

# PRODUCT AT A GLANCE

## Package contents

Wireless microscope



Installation CD



Adaptor



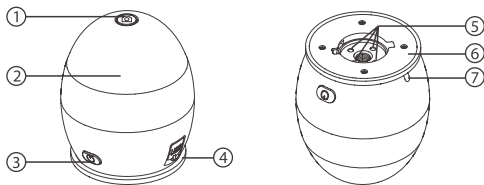
User manual



USB cable



## Product overview



- 1. Capture button
- 2. Focusing ring
- 3. Power button
- 4. USB port

- 5. LED lights
- 6. Adaptor slot
- 7. Indication light

## Product specification

### Connection type

802.11 b / g / n

### Effective magnifications (on a 17" monitor)

43x

### Effective viewing area

8 x 6 mm

### Illumination

Four LEDs

### Sensor

CMOS

### Size

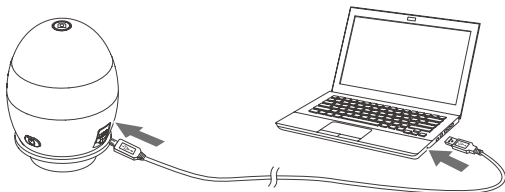
Ø70 x 85 mm

### Weight

170 grams

# GETTING STARTED

## Charging

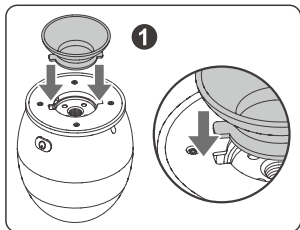


Charge the wireless microscope before using it.

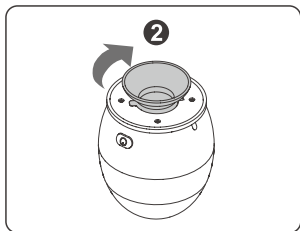
Connect the wireless microscope to a computer with the USB cable provided.

Status	Indication light colour
Charging	Red
Charged	Green

## Assembling the product

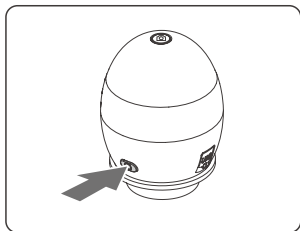


Insert the adaptor into the adaptor slot.



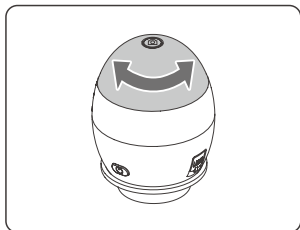
Fasten the adaptor by turning it gently in the clockwise direction.

## Turning on the device



Press and hold the power button for 2 seconds.

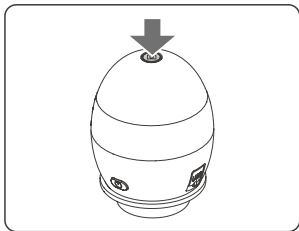
## Focusing



Adjust the focus of the image manually by rotating the focusing ring.

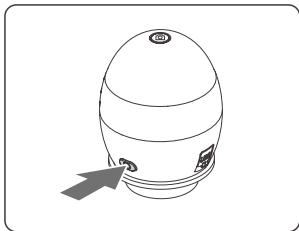


## Capturing



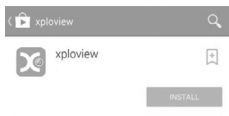
Press the image capture button to capture an image.

## Turning off the device



Press and hold the power button for 2 seconds to turn off the device.

# INSTALLING THE SMARTPHONE APP

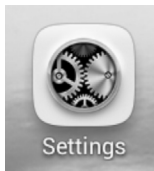


Search for "xploview" on Play Store or App Store on your mobile device and install the app.

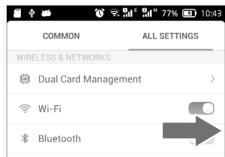
## USING THE XPLOVIEW APP WITH A SMARTPHONE

### Connecting the device

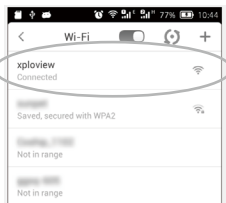
Turn on the wireless microscope (see P.9).



Go to "Settings".



Turn on Wi-Fi connection.



Search for and connect to "xploview\_xxxxxx" under the list of available devices. ("xxxxxx" is a 6 digit code unique to your device.)

The default password of the device is 12345678.

## Open the xploview app



### Note

The performance of the device may be affected in an environment crowded by Wi-Fi signal.

User may experience a delay in real-time image display depending on the speed of the Smartphone processor.

## Button menu

The icons on the button menu:



Enter Image / Video playback mode

Picture

Picture playback

Video

Video playback



Capture on screen image



Enter Video mode



Start video recording



Pause video recording

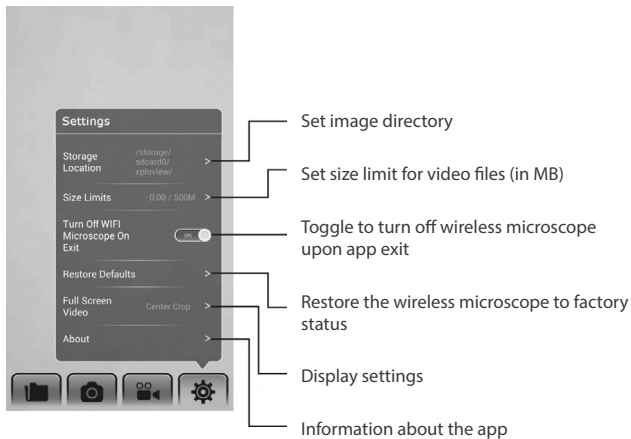


End video recording

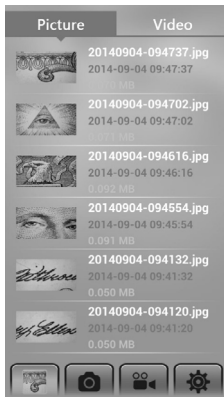


Open System Settings Menu (see system settings menu on page 14)

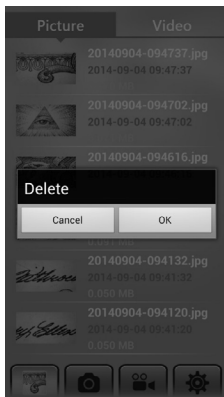
## System settings menu



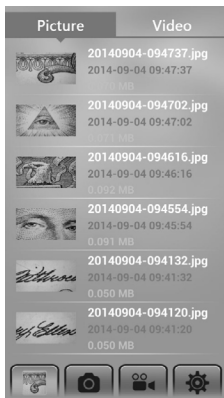
## Deleting an item



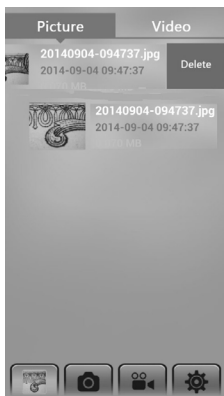
Android:  
Press and hold an item for 2 seconds.



Tab "OK" to confirm.



IOS:  
Swipe the item to the left.




Tab "Delete" to confirm.



# INSTALLING THE COMPUTER SOFTWARE

## Software installation

### Windows based PC

- Insert the supplied application CD to the CD-ROM of the computer.
- Double click the "xplovview wireless v3.2.xx.exe" icon <  > located on the driver CD.
- Follow the xplovview setup wizard to install the application software for the wireless microscope.

### Mac OS based PC

- Insert the supplied application CD to the CD-ROM of the computer.
- Double click the "xplovview wireless v3.2.xx.dmg" icon <  > located on the driver CD.
- Drag the xplovview icon <  > into the Applications folder.



# USING THE XPLOVIEW SOFTWARE WITH A COMPUTER

## Connecting the device


Turn on / connect the WiFi adaptor in the Windows or Mac operating system.

Search for and connect to "xploview\_XXXXXX" under the list of available wireless networks. ("XXXXXX" is a 6 digit code unique to your device.)


The default password of the device is 12345678.

## Starting the xploview software

Windows based PC

The xploview software can be launched by double clicking the xploview icon <  > from the desktop, or from the start menu.

Mac OS based PC

The xploview software can be launched by double clicking the xploview icon <  > from the Applications menu.

## Selecting the device in the xploview software

From the "Device" drop-down menu under the "System Settings" menu, choose "xploview Wireless" and click the "Connect" button and click "Apply".



## Button menu

The icons on the button menu :



Open **System Settings Menu** (see system settings menu on page23).



**Capture on screen image.**



To start and to stop **Timed Shot**. Images will be captured at a regular interval (see system settings menu on page 24 to adjust frequency and duration).



To start and to stop **Video Recording**.




**Information** of the application software. This information maybe helpful when updating software.

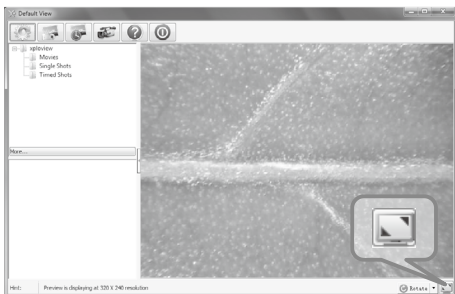


**Shut down** the application software.

## Full screen viewing

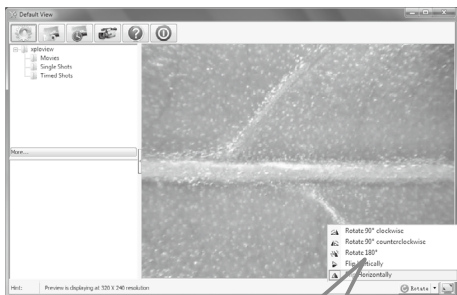
To activate the full screen mode, click the full screen button  located on the bottom right corner of the xploview application software window.






To exit full screen mode, either double click on the screen, or press the "Esc" button on the keyboard.

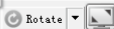


## Image rotation / flip

Click <  > button to rotate or preview screen.



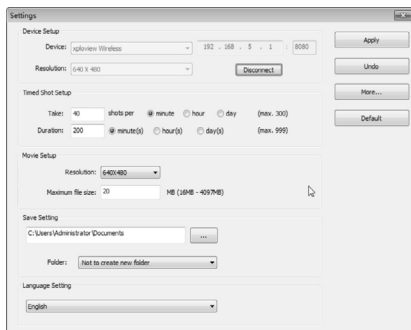
-  Rotate 90° clockwise
-  Rotate 90° counterclockwise
-  Rotate 180°
-  Flip Vertically
-  Flip Horizontally



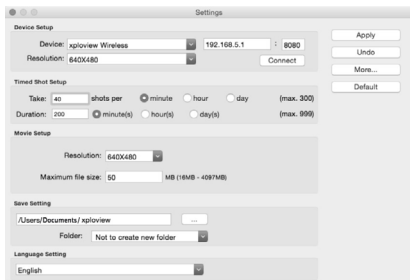
## System settings menu

The first time the xpliview software is started, the default settings will be loaded, you may change these settings manually in the system settings menu.

### Windows based PC



### Mac OS based PC



## Device setup

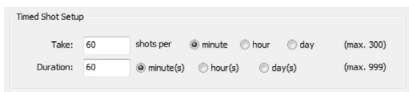
If the image captured by the wireless microscope was not displayed by default, you can change this by selecting "xploview wireless" from the "Device" drop-down menu and click "Connect".



The Device Setup dialog box contains two dropdown menus. The first menu, labeled "Device:", has "xploview Wireless" selected. The second menu, labeled "Resolution:", has "640 X 480" selected.

## Timed shot setup

The frequency and duration of automatic images capture can be adjusted under this option.



The Timed Shot Setup dialog box has two rows of controls. The first row is for "Take:" with a text input of "60", the label "shots per", and three radio buttons: "minute" (selected), "hour", and "day". A "(max. 300)" label is to the right. The second row is for "Duration:" with a text input of "60", three radio buttons: "minute(s)" (selected), "hour(s)", and "day(s)", and a "(max. 999)" label to the right.

## Movie setup

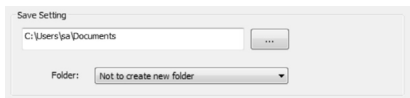
The resolution of videos you record can be changed from the "Resolution" menu. You can also set a maximum file size for each video.



The Movie Setup dialog box contains a "Resolution:" dropdown menu with "640X480" selected. Below it is a "Maximum file size:" text input with "50" entered, followed by the text "MB (16MB - 4097MB)".

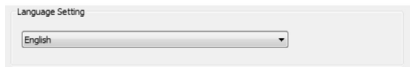
## Save setting

The default location for captured images or videos can be changed under this option.



## Language setting

The language of the xploview software can be changed under this option.

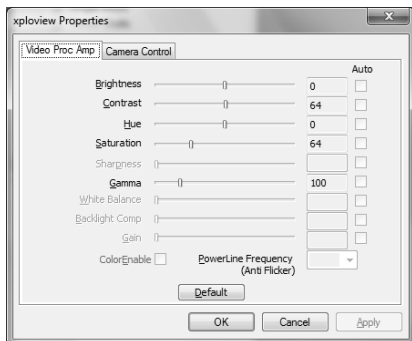


## Advanced settings

By clicking the "More..." button on the right of the system settings menu, you will be able to manually adjust all of the image settings. Note that the settings available may be different, depending on your operating system.



## Windows based PC

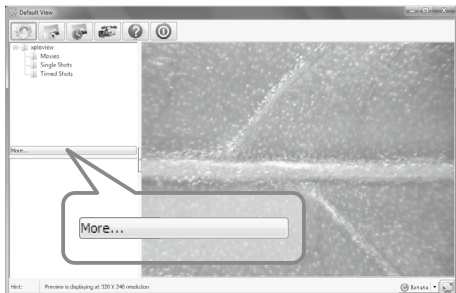


## Mac OS based PC



## Saved files

With the xploview application software opened, you can locate the saved files folder by clicking the "More..." button located on the left of the main software window.



## Uninstalling the xploview software

Windows based PC

Select "Uninstall xploview" from the start menu (Start > All Programs > xploview wireless > Uninstall xploview).

Mac OS based PC

Drag the xploview wireless application icon from the "Applications" folder to "Trash".

## Warranty & Support

This product is provided with a one year warranty for problems found during normal usage. Mistreating the Easi-Scope Wireless or opening the unit will invalidate this warranty.

All out of warranty repairs will be subject to a replacement fee.

## Technical Support

Please visit [www.tts-group.co.uk](http://www.tts-group.co.uk) for the latest product information.

Email [feedback@tts-group.co.uk](mailto:feedback@tts-group.co.uk) for technical support.

TTS Group Ltd.  
Park Lane Business Park  
Kirkby-in-Ashfield  
Nottinghamshire,  
NG17 9GU, UK.  
Freephone: 0800 318686 Freefax: 0800 137525

TTS is proud to be part of **RM** plc

## Easi-Scope Wireless™

WARNING: Do not dispose of this product in household waste. Hand it over to a collection point for recycling electronic appliances.

WARNING! Not suitable for children under 36 months due to small parts – choking hazard. Made in China, on behalf of the TTS Group Ltd.



TTS Product Code:  
**EL00470**